

SPG, ProG, Horizontals STATUS REPORT 2020

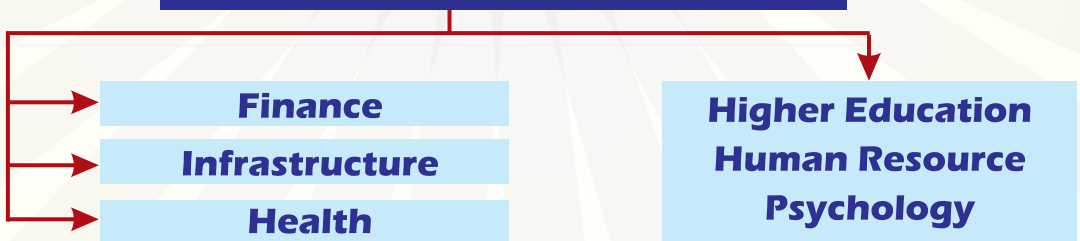


**CONNECT TO
COLLABORATE... CONNECT TO
CONTRIBUTE...**

SPECIAL PURPOSE GROUPS



PROFESSIONAL GROUPS



HORIZONTAL SUPPORT GROUPS



SPG, ProG, Horizontals STATUS REPORT 2020

**CONNECT TO
COLLABORATE... CONNECT TO
CONTRIBUTE...**

Index

1. Looking Back to Move Ahead	2
2. The Concept	3
3. Information about SPG, ProG and Horizontals	5
4. SPG National Integration and National Security	10
5. SPG Ecology and Environment	12
6. SPG Livelihood and Employment	14
7. SPG Emerging Technologies	15
8. SPG Arts and Culture	17
9. ProG Infrastructure	19
10. ProG Finance	20
11. ProG Health	22
12. ProG Higher Education, Human Resource, Psychology	23
13. Advocacy & Research Horizontal	24
14. Enterprise and Enablement Horizontal	26
15. Networking, Database and Portal Support Horizontal	28
16. Field Project Support Horizontal	29

LOOKING BACK TO MOVE AHEAD

- Vivek Kulkarni,
1973

Prabodhini was a different school ! Rarely a school will have such a diverse and rich alumni and also with such a extremely close bonding with each other. However the most important thread connecting us is **Our Batch** so we have prepared the alumni portal database in a batch wise manner and we reach out to all alumni through the **batch coordinator**.

Thinking about the activities of the alumni, it was felt that we need to create chapters not location wise like other reputed institutions. In one batch also we have got alumni having graduations in different disciplines and working in diverse sectors. So we thought that we can have **Professional Groups**, we call them ProGs and four such professional groups have become active during and after the golden jubilee celebrations.

With this process we conceived a new idea of **Special Purpose Groups** (SPG), which could be typical of Jnana prabodhini. In our school we were taught to study the problems of our country and think about solving those problems. So all of us have a concern or a passion for certain **national or global issue**. Hence in the SPGs we do not look for any professional qualification but those who have a concern or a passion for a national or global issue and want to contribute in the solution of that particular Issue, can come together to form a group.

In October 2019 four groups were formed with 7 to 10 members and were given a task of studying four different important topics and producing document on that and present their studies in the big event of 22nd December,

The four groups did extremely well and all of us remember the excellent presentations we got on 22nd December 2019, The four SPGs were Emerging Technologies, Ecology and Environment, Livelihood and Employment, and National Integration-National Security. After the big event all the SPGs assembled in January and a new SPG Arts and Culture was formed on 19th of January. The two ProGs who have met once were professionals in the Finance sector like CA, CS, banking, taxation etc and professionals in the Infrastructure sector like architects, civil engineers, builders, interiors decorators etc. In addition to these two ProGs in April a professional group of Health professionals including all different pathies as well as dieticians, fitness workers etc and lastly in August 2020 the fourth ProG was formed with professionals in the sector of higher Education, Human resource and Psychology.

An important Idea evolved in this May. The Groups needed support of verious types. So a **Horizontal support system** was constructed with the help of senior experts from the SPG, ProG, core members. Horizontals support was created for Advocacy & Research, Enterprise & Enablement, Networking & Portal and JP Field Pilot projects.

So presently we have 5 SPGs and 4 ProGs and 4 Horizontals active and at different stages of their progress. In view of the tagline of our alumni association “connec, reconnect and continue to connect”, the tagline of all these groups is “**connect to collaborate and contribute**”.

The year was not normal as all of you are aware and the covid-19 scenario which was unprecedented, has set up many New Normals. However adjusting to the new situation, a lot of virtual online meetings took place and we really could generate some significant work in the year 2020.

This report presents a very brief account of the work done by all these 13 groups in this year. We hope that you read the report and appreciate it and give us your feedback and more than that we request all the alumni and other associates of Jnana prabodhini to join this meaningful endeavour of SPGs and ProGs and do connect to collaborate and contribute...

Difference between SPG / ProG and Alumni association

1. SPGs are supposed to be focused on solving problems / advancing an agenda. Thus they are primarily concerned with the questions of “how”. How do we further entrepreneurship?, how do we minimise damage to the environment, how do we promote national integration. How do we integrate various art forms in improving education ? --- could be different questions / problems in front of the SPGs. The age, qualification, experience and backgrounds of the members may vary but what is common is the interest in, conviction about, knowledge of the SPG agenda. On the other hand the ProGs are more concerned about enhancing the well being of its members and also the well being of what is common to all of them. In this case it is their experiences/ memories/ relationships with other students/ with teachers and other employees of their respective schools. The alumni association could have sub groups based on the specific school of JP they studies at, specific class or batch they were part of. Another variation is grouping based on similar professions that they are in. In this grouping nurturing and growing the togetherness of one another and of the Common heritage is the key purpose.
2. The activities of SPG will be primarily about studying the problem, developing common vocabulary, understanding varying and sometimes opposing perspectives about solving of the problem, debating alternatives, developing common agenda to be advocated, building awareness of a particular agenda among general public etc. e.g. Environmental group took efforts to build a common vocabulary and perspective on different dimensions of environmental issues and are thinking of developing awareness programs / educational programs for different sections/ age groups of the society, joining hands with like minded groups like ecological society of India etc. If they decide to implement a specific project like developing eco friendly energy based villages – they may need to work in a more structured fashion, possibly become part of an organisation or set up an organisation which then will be concerned more with what and how.
3. On the other hand the alumni association and ProG could be more concerned with creating platforms for members to know each other better, helping one another in personal as well as professional issues, arranging match making as employer employee or as partners in work or in marriage, they may undertake activities like get togethers. At another level they would be keen to be aware of the happenings of their common heritage. They may come together when that common heritage is getting disturbed e.g. to help JP Prashala to fight its case. They will feel happy because of the elevation of one of the past students as chief of Army staff and will feel sad due to untimely demise of Ponshe sir or Bhai phadke.
4. ProG subgroup becomes SPG for advocacy, Policy, Project etc Health policy, Fiscal policy etc. Thus SPG as a form is more suitable as a platform for exchanging and building on ideas to solve a specific problem while alumni association of ProG is a platform to enhancing the well being of one another as well as the well being of the common heritage goes more with What than How we do ?

5. SPG members will need to be respectful towards one another while disagreeing on their approaches of solving the common problem. They need to remain committed to the process of engaging and interacting with one another to improve rigour of their arguments and approaches. On the other hand ProG or alumni members will try to relate emotionally and practically – they may or may not be aligned to the ideology.

Similarities

1. these three forms are new to JP and are not well rooted
 2. members will be part timer
 3. The leadership will have to be facilitative
 4. These are fragile forms as compared to other forms of organisation
 5. The activities will be more emergent than thought through or planned
 6. external accountability is less important than accountability to the members
- One person may be a member of more than one SPGs as well as alumni associations, ProG etc as the needs met are different .Ways of running these will be different from what we are generally used to .The structure, roles and processes will need to be worked out which are aligned to the respective purposes.

- *Four aspects of Vibrant groups*
 1. *Who we are – our identity/ philosophy/ values*
 2. *What do we do – our goals/ plans/ activities/ achievements*
 3. *How we do things in terms of best and next practises/ processes ways of working*
 4. *How do we feel about one another/ sense of belonging/ togetherness/ other feelings*
- All four questions are relevant
- *In my view, all kinds of organisations – big or small- temporary or meant for long term-registered or unregistered - legal / illegal etc need to find answers for all the four questions – let me illustrate – joshi wadewale – my namesake – the most visible part is making and serving wadas– taking money– the ‘ what questions” slowly the how questions comes in – e.g. how to improve efficiency, how to set up branches, how to recruit, how to save costs etc – the HOW questions – then there is a dimension of employees are feeling about each other – are their relations cordial, what feeling they have about company – how can company create a goodwill in their mind so that they don’t leave just for a few rupees more – Now we are dealing with Feelings dimensions – Don’t know about “ the who questions in Joshi wadewale. but Mrs Indra Nooyi tried to face this question in her term as CEO – she felt that top talent wont continue with the company unless there is a larger purpose- she talked about fun to eat food and good to eat food – creating a larger purpose*

INFORMATION - TIMELINE

- Oct 19** - 4 SPGs formed : SPG in Livelihood & Employment (SPG-LE), SPG in Environment & Ecology (SPG-EE), SPG in National Integration & National Security (SPG-NINS) & SPG in Emerging Technologies (SPG-ET)
- 20 Oct 19** - ProG in 'Infrastructure/Civil Construction & allied activities' formed
- 1 Dec 19** - ProG in 'Finance, Tax, Accounting, BFSI sectors' formed on 01st Dec.
- 22 Dec 19** - Presentation of the 'Concept Paper' by each of the 4 SPG teams to 3000+ audience consisting of Alumni and JP well-wishers in the Suvarna Mahotsava Function.
- 19 Jan 20** - SPG in Arts & Culture (SPG-AC) formed. Over 150+ alumni and some non-alumni participated, expressed their interest and joined the SPG of their interest.
- 7 Mar 20** - Lecture by Shri. Vivek Sawant (Chairperson, JPSS) on 'Emerging Technological Trends & JPP's Role' to all SPG members – about 80+ attendance on 07th March. Let Functions decide the Structure and Focus on the Core Competence EDUCATION.
- 19 Apr 20** - ProG in 'Health & Wellness sectors' formed, ONLINE meet of 50+ Alumni.
- 21 Apr 20** - First Bi-Monthly Progress Review meeting of SPG Leads. Concept of Horizontals discussed and added to the structure.
- 10 May 20** - All SPG meet on Enterprise and Incubation by Gireendra
- 7 June 20** - All SPG meet on Enablement and Multidisciplinary Problems by Shirish and Ajay
- 11 June 20** - Second Bi-Monthly Progress Review meeting of SPG Leads. Comparison with JP steps of Developing an Idea from Think tank to Scaling up. Plan to Document all activities through Hubs.
- 5 July 20** - Guru Pournima Karyakram – hosted & performances by SPG-AC
- 26 July 20** - All SPG meet on Advocacy by Ajit Kanitkar.
- 23 Aug 20** - ProG in 'Higher Education, Psychology & HR sectors' formed.
- 21 Aug 20** - Third Bi-Monthly Progress Review meeting of SPG Leads. Branding Architecture and Blog space idea deliberated. Various Task Forces identified and started functioning.
- 17 Oct 20** - Fourth Bi-Monthly Progress Review meeting of SPG Leads, 8 Horizontals combined pair wise to form 4 Horizontals with their Core Teams. Plans to make Extended Groups more active.
- November and December 20** - Meets of Extended Groups. New Task forces formed and Old consolidated. Yearly reviews taken and reports submitted.
- 20 December 20** - Yearly Review meeting as segment 1 of JP Alumni MAHAMELAVA....

LIST OF SPG, PROG AND HORIZONTAL SUPPORT GROUPS

Special Purpose Group (SPG):

1. Arts & Culture (AC) – Work on Happiness Index through the medium of Arts & Culture
2. Ecology & Environment (EE) – Work on Ecology & Environmental issues – national & global
3. Emerging Technologies (ET) – Leverage emerging technologies for national problems
4. Livelihood & Employment (LE) - Work on national issue of livelihood and employment
5. National Integration & National Security (NINS) – Work on integrating national security and national integration paradigms.

Professional Group (ProG):

1. Infrastructure – professionals related to Infrastructure, Architects, Civil Engineers, Interior Decorators, Builders, and allied fields.
2. Finance – professionals related to BFSI, Tax, CA, CS and allied fields.
3. Health – professionals related to Health (Human and Animal) including alternative medicine, lifestyle and allied fields.
4. Higher Education, Psychology and HR – professionals related to Higher Education, Psychology, Human Resource & allied fields.

Horizontal Support Group (Horizontal):

Across-the-board support for SPG/ProG/JP/Other Alumni Groups/Individual Alumnus)

1. **Advocacy & Research** –
 - 1.1. Mandate: helping them to garner public and government support for their projects
 - 1.2. Mandate: helping them to do the on- ground research for their projects
2. **Enterprise & Enablement** –
 - 2.1. Mandate: helping them to define their vision, chart a strategy etc.
 - 2.2. Mandate: helping them to define their ideas/projects/start-ups, incubation, funding ecosystem
3. **Networking, Database & Publications** –
 - 3.1. Mandate: helping them to connect with other external like-minded organizations, experts etc.
 - 3.2. Mandate: helping them to connect internally with other alumni in supplementary fields, to publish their achievements/products internally and externally etc.
4. **Field Project Support** –
 - 4.1. Mandate: helping them to raise finances
 - 4.2. Mandate: helping them to do pilot projects at Harali and/or Velhe.

	Group name	WhatsApp group members		Database
		Core	Ext	
SPG1	Emerging Technology	8	53	48
SPG2	Ecology & Environment	9	59	54
SPG3	Livelihood & Employment	9	88	115
SPG4	National Integration & National Security	11	106	64
SPG5	Arts & Culture	10	94	56
	SPG Total	47	400	337
PROG1	Infrastructure	6	54	79
PROG2	Health	5	92	56
PROG3	Higher Education, Psychology and HR	8	115	89
PROG4	Finance	9	87	49
	PROG Total	28	348	273
	Grand Total	75	748	610
	SPG members	337	68 BatchCos included out of 150	
	PROG members	273		
	2 SPG/PROG members	-58		
	3 SPG/PROG members	-12		
	Total in database	540		



All SPG Meet January 2020

LIST OF TASK FORCES, AND THEIR LEADS

1	Amit Vaze	1989	CoreAC	1	Folk Arts and Cultures
2	Milind Shankar Sant	1980	CoreAC	2	Integrating Arts and Education
3	Sameer Dublay	1984	CoreAC	3	Urban and Rural Art and Culture
4	Chaitanya Koranne	1977	CoreEE	4	Circular Economy
5	Nitant Mate	1977	CoreEE	5	Energy in the context of Sustainability
6	Ajay Phatak	1977	CoreEE	6	Natural Resources Accounting
7	Sunil Dadhe	1977	CoreEE		
8	Aparna Athawale	1983	CoreEE	7	Urban Organic Waste
9	Nikhil Karkhanis	1984	CoreET	8	Block Chain/ communication
10	Rahul Dharmadhikari	1987	CoreET	9	Digital Education
11	Santosh Gondhalekar	1980	CoreET	10	Energy Future scenario
12	Surendra Thakurdesai	1986	CoreHE	11	NEP Higher Ed Human Resource
13	Aditi Gosavi	1995	CoreHE		
14	Yogesh Deshpande	1982	CoreHE	12	Online Education Effectivity
15	Aniruddha Wagh	2008	CoreLE	13	HE Business ideas platform
16	Prashant Joshi	1996	CoreLE	14	Start-up scaling support
17	Ashutosh Barmukh	1995	CoreNINS	15	Border and Difficult states
18	Asit Argade	1995	CoreNINS	16	Caste and Reservation
19	Atulchandra Kulkarni	1978	CoreNINS	17	Cyber Security
20	Manoj Bagul	JP	CoreNINS		
21	Viraj Deochake	2014	CoreNINS	18	Field Bastar-J&K
22	Waman Parkhi	1982	CoreNINS	19	Koran Study
23	Kiran Palsule	1972	CoreNINS	20	Narratives and perceptions
24	Ajit Kanitkar	1976	Research	21	Make In India for Defense sector and SMEs
25	Amol Phalke	JP	Research		

CORE MEMBERS OF ALL GROUPS – EXCEPT TASK FORCE LEADERS

SPG Core Members				ProG Core Members			
1	Ramdas Palsule	1978	CoreAC	1	Damle Prasad	1986	CoreFin
2	Milind Oak	1981	CoreAC	2	Kulkarni Pallavi	1993	CoreFin
3	Vaidehi Kelkar	2004	CoreAC	3	Kanade Sagar	1998	CoreFin
4	Shivali Vaichal	2004	CoreAC	4	Kulkarni Parag	2005	CoreFin
5	Aboleee Dhayarkar	2006	CoreAC	5	Chiplunkar Sharmishtha	1987	CoreFin
6	Bhargavee Kanade	2006	CoreAC	6	Khatri Anjali	1995	CoreFin
7	Mandar Phatak	2003	CoreAC	7	Phatak Bhagyashri	2003	CoreFin
8	Arvind Karandikar	1977	CoreEE	8	Anushree Godbole	2002	CoreHE
9	Mandar Gokhale	1995	CoreEE	9	Deepti Waghmare	1988	CoreHE
10	Jidnyasa Mulekar	2000	CoreEE	10	Dhanashree Bodhani	1990	CoreHE
11	Pravin Dravid	1966	CoreET	11	Mukul Kulkarni	2003	CoreHE
12	Pradeep Pranjape	1979	CoreET	12	Abhijeet Ekambikar	1997	CoreHE
13	Sangita Joag	1983	CoreET	13	Deogaokar Kedar	1989	CoreHealth
14	Omkar Gurjar	1988	CoreET	14	Gujrathi Aditi	2004	CoreHealth
15	Mitesh Achwal	JP	CoreET	15	Sethia Prayag	2004	CoreHealth
16	Sanjay Purandare	1977	CoreLE	16	Thete Tanushri	1997	CoreHealth
17	Sanjay Chitnis	1978	CoreLE	17	Prajakta Doshi	2000	CoreHealth
18	Chaitanya Bokil	1999	CoreLE	18	Vaidehi Kelkar	2004	CoreHealth
19	Abhay Bhat	1977	CoreNINS	19	Anant Abhang	1969	CoreInfra
20	Prashant Divekar	JP	CoreNINS	20	Atul Manohar	1983	CoreInfra
				21	Aditi Gokhale-Navgire	1983	CoreInfra
				22	Rahul Ravat	1984	CoreInfra
				23	Ganesh Jadhav	1989	CoreInfra
				24	Aayushi Khadilkar	2011	CoreInfra
Horizontal Support Core Members				JP Support Members			
1	Ajit Kanitkar	1976	Advocacy	1	Abhijit Kapre	1987	Field Projects
2	Amol Phalke	JP	Research	2	Suvarna Gokhale	1984	Field Projects
3	Dnyanada Deshpande	1987	Advocacy	3	Subhashrao Deshpande	1967	JP Interface
4	Shirish Joshi	1977	Enable	4	Vivek Kulkarni	1973	JP Interface
5	Gireendra Kasmalkar	1980	Incubation	5	Nachiket Nitsure	2005	JP Interface
6	Geetanjali Bhat	1983	Enable	6	Shrinivas Desai	1983	Back Office
7	Anand Agashe	1972	Networking	7	Purnima Parekh	1987	Back Office
8	Rajendra Vaidya	1978	Networking	8	Sanket Bhandare	JP	Back Office
9	Ganesh Dangi	1989	Networking				

SPG : NATIONAL INTEGRATION AND NATIONAL SECURITY

8 to 10 Intense meetings; about 200-250 hours already spent. Network HUB and CORE structure has been initiated.

10 Task Forces planned; 8 started and 4 **currently active**,

1. “Bastar” Task Force/ Field Group:

Cross-Links with Yuvak Vibhag.

Paper on ‘Urban Linkages of Left-Wing Extremism’ planned; basic document ready.

Fortnightly Core Group Meetings

2. Jammu & Kashmir Interest Group

Cross-Links with Yuvak Vibhag, new perspectives

25 Member strong

3. Cyber Sub-group

Technological aspects, so Cross-Links with SPG-ET group

Very active - 13 meetings so far

Watchers Group constituted; already active in attending webinars of suspected organizations and reporting them

4. Quran Study Group

35 study sessions conducted so far under the guidance of Mr. Anish Chishti

Study of 4 basic pillars of Islam - Roja, Namaj, Zakat, Huj and also 6 chapters of Quran including Surah An-nisa which talks about rights and duties of women.

Discussions and debates about concepts such as Jihad, Burka, Talaq

- Task Force on creating a “Think Tank” on national security issues.

Oriented exclusively on “security” – financial security, energy security etc.

Oriented exclusively on Communal, caste tensions etc.

• Different sessions in the last year

Weekly intra-SPG and inter-SPG meetings to plan, study, formulate and document the ‘Concept Paper’ for each of the SPG and also deliberation on the overall synergy between these SPGs (Nov 19)

Frequent meetings of Cyber Security sub-group of SPG-NINS

Online workshop hosted by SPG-NINS on Advocacy & Policy Making by Ajit Kanitkar (26/7/20

SPG NI & NS and JP कार्य दिशा गट AND Border State Connect Group combined meeting (08/08/2020).

1. Open session by Atulchandra Kulkarni and Dr Asit Argade on National Integration and National security - challenges and opportunities.
2. Open session by Air Marshal Bhushan Gokhale on Understanding Geopolitics, its impact and conflict of interest.
3. Information and psychological warfare - Open session by Brig Abhay Bhat (09/08/2020).
4. Understanding India China Standoff by Wg Cdr G. Aditya Kiran (limited members) (09/09/2020).
Wg Cdr G. Aditya Kiran on India's higher defense organizations and challenges.
5. Session on Terrorism by Atulchandra Kulkarni (27/09/2020).
6. Open session on Left wing extremism and National Integration by Dr Rahul Pungaliya (11/10/2020).
7. Book review by Harsh Waghela on Hindu terror - Insiders Account by RVS Mani.
8. Paristhiti dnyanacha abhyas with respect to Ni NS by Prashant Divekar
9. Open session by Dr. Awinash Biniwale – भाषा: विचार की गोंधळ

• **Task Forces and their leaders:**

1. Quran Study - Waman Parakhi
2. Bastar Task Force - Viraj Deochake
3. Cyber (and Watchers) - Manoj Bagul
4. J&K interest group - Viraj Deochake
5. Caste system - Dr Asit Argade
6. Narratives and Perceptions - AVM K P Palsule (Retd.)
7. Taskforce on creating healthy space for discussion in society - Cdr Abhijit Kapre
8. School Curriculum and National Integration - Anaghatai Lavalekar



NINS - Cyber Task Force Meeting

SPG : ECOLOGY AND ENVIRONMENT

In the first meeting of ENV SPG in January 2020 a metrics was proposed as a foundation to building the task forces in the future. A core group consisting of members who participated in the preparation of report and presentation on 22 December 2019 and an extended group of all ENV SPG members are formed at present. Both the groups are connected through WhatsApp and have been meeting in person (pre-Covid-19) and virtually. A network structure was proposed and accepted by all members for running the SPG.

So far, the extended group has conducted **8 sessions** on various environment related subjects. A summary of these sessions is as follows.

1. **A lecture Series** on 'Fundamental Concepts in Ecology & Environment, Environmental History, Economics' was conducted by Ajay Phatak (March 20). In this series 4 Capability Building sessions were conducted in 3 months.

2. **Two Workshops** series by Shirish Joshi to SPG-EE on 'Visioning and Building Objectives for the SPG' (April 20). In this workshop the organizational structure of SPG was discussed at length. A summary report of the workshop is available.

3. The session conducted by Nitant Mate focussed on the use of biofuels as renewable energy source

4. Another session was conducted by Kuldeep Varma on the conventional hydrocarbons as source of energy.

5. Aparna Athavale conducted a lecture on composting where all the basics of composting were covered in detail.

6. On the occasion of International Tiger Day, a session on Tiger conservation by Paresh Deshmukh and Varad Bansod was organized which was open to all.

7. One **panel discussion** regarding Ganeshostav celebration was conducted in August 2020 where the current practices of celebration were discussed at length from environmental, social, cultural, and economy perspectives.

8. **Online workshop** was hosted by SPG-EE on 7th June for all SPG and ProG members on Organizational Structures with particular emphasis on SPG & ProG by Shirish Joshi and Need for Holistic Approach for Problem Solving by Ajay Phatak.

As a result of **visioning sessions**, a Network Hub was formed and key persons, roles & responsibilities were defined (June 20). Ajay Phatak, Aparna Athavale, Mndar Gokhale, and Jidnyasa Mulekar are currently part of the ENV SPG network hub. The hub meeting occurs bi-weekly to discuss current plans and future proposals.

Apart from these sessions, a few other activities/initiatives have been taken within the group or at an individual level. These include **Networking efforts** and **Core interests/strengths mapping**. Discussion on with JP-Harali about 'Restoration Project' are underway. Two papers have been published by members of group.

Future plans:

Following four **task forces** have been proposed. The details of each taskforce are given in the main report.

1. Circular economy led by Chaitanya Koranne
2. Energy in the Context of Sustainability led by Nitant Mate
3. Wet waste management led by Aparna Athavale
4. Natural Resources Accounting led by Sunil Dadhe.



Ecology and Environment



Livelihood And Employment

SPG : LIVELIHOOD AND EMPLOYMENT

- Monthly meet-ups are regular, WhatsApp Groups and Email Groups are formed, LinkedIn is used.
 - **MONTHLY MEET UPS**
 - **Meet-up 1** - (Feb 2020 - Attendance 90)
 - Session on start-ups in agricultural sector by Dr Ajit Kanitkar, 76 batch alumnus
 - Concept Presentation - Village-based Tourism by Mandar Deogaokar, 93 batch alumnus
 - **Meet-up 2** - (May 2020 - Attendance 130)
 - First Virtual Meet-up post Covid Lockdown
 - Experience sharing by Hrishikesh Rajpathak, 96 batch alumnus on his start-up founding, scaling up, pivot and exit learnings
 - Session by Gireendra Kasmalkar, 80 batch alumnus on Start-up Funding and Incubation Ecosystem
 - **Meet-up 3** - (July 2020 - Attendance 80)
 - Experience sharing by Rohan Panse, 06 batch and Vinay Chutake, 94 batch alumnus on starting and scaling up their Healthcare sector entrepreneurial venture
 - Session by Shirish Kulkarni, SPG LE member and JPP parent, on growth strategies for MSMEs
 - **Meet-up 4** - (Dec 2020 - Attendance 40)
 - Session by Dhruv Paknikar, 2009 batch alumnus, on Design practice as core to business growth
 - **Taskforces**
 - 1 Research Taskforce on "MSMEs working in Defense sector" led by Dr. Ajit Kanitkar and Amol Phalake with 8 members from SPG LE. Interviews and data collection in progress. Report out expected by Jan'21.
 - 2 Enablement Taskforce on "Encouraging Entrepreneurship, scaling of existing start-ups, support & mentoring for such entrepreneurs" especially for young JPP alumni. Led by Prashant Joshi, Sagar Kanade, Aniruddha Wagh. Gathering of new entrepreneurs data in progress from alumni - Experiences and problems faced (Batch 2008-18). First meet-up expected in Jan' 21.
 - 3 1 Potential Task Force identified - Task Force on "Platform for College Level students to present their ideas & its business case and get it reviewed by Expert Panel". Plan to launch in early 2021
 - Core committee planning to discuss on the next plan.
 - o Primary Objective- **Activating Task Forces (Enablement, Participation & Advocacy).**
- 3 SENIOR MEMBERS SHIFTED TO HORIZONTALS, AJIT, SHIRISH AND GIRINDRA**

SPG : EMERGING TECHNOLOGIES

In the Jnana Prabodhini Golden Jubilee program on 22nd December 2019, Technology SPG presented a vision based on the concepts of Abundance.

Technology is a key factor that can unlock human potential by replacing resource constraints by abundance of resources. Technology has potential to be great leveler that can provide opportunities to the most deprived communities and individuals on the planet. Taking this a guiding principal we chose to organize ourselves. We used the book Abundance by Peter H. Diamandis Steven Kotler... as a guide and formed following groups

1. Agriculture – Pravin Dravid
2. Education – Rahul Dharmadhikari
3. Energy – Santosh Gondhalekar
4. Food and immunity – Sangita Joag
5. Swatch Bharat – Mitesh Achwal
6. Technology interest group for Block chain
Nikhil Karkhanis
7. Water – Pradeep Paranjape

Overall the activities of the group were as follows.

1 Following lectures were conducted in 2020.

- Abundance – Pradeep Paranjape – Concept of abundance and how it unfolds in various domains.
- Block Chain – Nikhil Karkhanis – introduction to Block Chain technology and its applications
- Energy Abundance – Santosh Gondhalekar – Bio digester technology and its applications for energy abundance
- Knowledge Abundance Creating knowledge - Wiki Way – Subodh Kulkarni

2. Trainings

- Introduction to programming and logic with hands on and assignments for school students - Chinmay Shah, Rahul Dharmadhikari
- Introduction to augmented reality an virtual reality – Ravi Palekar

3. Visits

- Harali – Visit to Jnana Prabodhini Harali center for Education group
- Bhor area – Bio diversity

4. Projects

- Swatch Bharat – technology for automation and simplification of house to house garbage collection in Pune – Mitesh Achwal
- Mobile app and support system for learning mathematical problem solving techniques for school students - App development – Viraj and Rahul Dharmadhikari

5. Supporting JP activities

- Support for various online events and trainings for Jnana Prabodhini departments Capacity building of the JP departments to enhance delivery of educational and other content in lockdown times.
- Donation of networking and audio visual equipment to prashala.

6. Meetings

The group started meeting every Sunday at 10:00 for an hour. These meeting continued till lockdown and then moved online. After April 2020, the meetings discontinued and now have restarted from Nov 2020.

There are 2 WhatsApp groups

Core: a core group of volunteers who are helping drive the activities. This is not a limited group but everyone who is willing to contribute time is welcome to join. This group meets every alternate Sunday at 10:00 AM on Zoom.

Extended: This is group of all interested alumni and non-alumni to connect with each other and share their knowledge and happenings. This group meets once a month - 4th Sunday of every month 10 am

Plan for 2021

The coming year will see thrust in following areas

1. Invite and facilitate high performing JP alumni in various technology sectors to present to entire JP alumni about their work, their interest and its applications. This will be a monthly activity – Omkar Gurjar
2. Continue the whole group's online meetings to build sharing and synergy – 4th Sunday of every month – Pradeep Paranjape
3. **Task forces** for special study and projects
 1. Digital Education – To story the appropriate technologies, their usage and experiences of usage in current situation. To suggest / build / help adopt technology for various schools and organizations – Rahul Dharmadhikari
 2. Blockchain – To study and demonstrate the block chain and allied technologies and their applications. To evangelize and experiment with these technologies in JP sphere of influence – Nikhil Karkhanis
 3. Energy – Santosh Gondhalekar and team are at an important point in their journey of “cooling the earth” by spread of renewable bio fuel technology. Santosh is leading this group to spread this technology and invites all alumni to contribute to this.



Emerging Technologies Group

SPG : ARTS AND CULTURE

To work on the Happiness Index of India (कलामाध्यम – समाजस्वास्थ्यासाठी)

SPG in Arts & Culture (SPG-AC) formed (19 JAN 20) Motivated by success in the 22nd Dec SM function (Dec 19)

Regular meetings – every week to discuss and brainstorm various activities for future

Meetings of the core group till today (21/11/2020) – 7 nos (recorded), 10 nos (not recorded)

Extended group participation:

Two meetings initially as initial introduction + WhatsApp group discussions

सादरीकरण आणि आस्वाद – एका दिवशी तीन कला सादरीकरण आणि चर्चा (We are planning one such event every two months)

BLOG writing: Work in process: planning to submit 5 blogs by 30th November 2020.

Task Forces:

1. We are planning to include varied cultures – शहरी आणि ग्रामीण भागामधील कला (गायन, वादन, नृत्य, नाट्य, चित्रकला, शिल्पकला इत्यादी सर्व)
2. लोकसंगीतावर केंद्रीत वेगळे कार्यक्रम. विविध प्रकारचे लोकगीत गायन – गोंधळ, भारूड, नांदा – असे कार्यक्रम. सादरीकरणाच्या कला एकमेकांशी कशा जोडल्या आहेत (Lectures and Panel discussions)
3. SEMINARS: कलासमग्रता, knowledge generation, Research शिक्षणामधील कलेचा अंतर्भाव (विद्यार्थ्यांबरोबरच पालक + शिक्षक सहभाग)

Additionally we are planning to include Sports activities (as seen from the point of view of सौंदर्य आणि कलात्मकता), Indology, as well as various other forms of life from the above point of view.

We are planning to make a calendar for the next year 2021 in which we will cover all the aspects of Arts and Culture leading to Happiness.

• **Guru Pournima Karyakram** – hosted & performances by SPG-AC - 05th July

1. Definition of beauty and study aesthetics - by Rahul Pungaliya (1/8/2020)
2. Lecture on appreciation of Indian classical dance - Manasi Vaze. (17/10/20)
3. Lecture on appreciation of Indian classical dance - Aboli dhayarkar (23/10/20)
4. Geetanjali Bhat lecture ?

§ Arts/Music can play a significant part in shaping up public opinion. For instance, musicians impacting public opinion about government policies and promoting their ideologies.

- o Core committee meeting frequently. Discussion on defining happiness, setting objectives and groups' plan towards them. Enthusiastic and Diverse membership – Artists, Art-lovers and general interested.
- o **Plans** – Workshops, lectures and sessions. Focus on 4 streams – Music, Dance, Theatre and Films.



Art And Culture Group



The progress made by SPG/ProG initiative in a short span of time, marred by the Corona pandemic, has been impressive. But there is a long way to go before we can hope to attain the status of serious 'think tanks' in the public domain. There are three pre-requisites: rigour, rigour and rigour.

Open and regular dialogues with other stakeholders in society - not just the 'like-minded' ones - will be valuable.

Time investment is going to be critical to make all this possible. Since most members of these groups are engaged elsewhere, it will be a good idea to structure a 'time bank' with neatly assigned roles to individuals.

- Anand Agashe (1972)

ProG : INFRASTRUCTURE

ProG in '**Infrastructure / Civil Construction and Allied Activities**' called in short as '**ProG Infra**' was formed in October 2019.

First meeting was held on **20th October 2019** in JP campus. About 35 professionals attended the same. Basic introduction of each other was shared and idea about creating the group was floated.

A WhatsApp group was created and is active with about 50 professionals. Professional information is being shared on the group.

A core group of 6 was prepared. Had couple of core group meetings to discuss how the group can be made active and to share **Vision 2021** for the group. A Meeting of extended group happened in December 2020 to get more ideas on **Vision 2021**.

Vision 2021

Fortnightly / Monthly meetings of extended group.

Presentations of 3 senior members for 10 minutes each in first half of meeting. They will share their projects and experiences.

Presentation by junior members on subject he / she wants to pursue. Others to share their thoughts. So it will be interactive session.

Discussion and action on means to help JP in its infra projects and related issue. Help from Subhashrao will be taken to identify the projects and needs.

Discussion and action on ways and means to help each other in this group and to JP alumni.

Site visits of extended group to interesting infra / construction / interior projects will be planned.



Infrastructure Group

ProG : FINANCE

ProG in 'Finance, Tax, Accounting, BFSI sectors' formed on 1/12/20 **Approx: 80 Members**
Meeting of 70+ Alumni professionals Positive interaction, introductions and rapport building across the batches.

50+ professionals met in JP premises Cross-batches networking initiated

CA / CS professionals: 30

Banking, Corporate finance, Insurance: 20

Financial services, Fintech: 20

Others: 10

Last year summary:

- Event /Sessions/Webinars:

1. Knowledge session by **Nikhil Karkhanis (1984 batch)** on **Blockchain** to explain the concepts to applications in Finance.
2. Webinar on Evolution and Future challenges in Direct Taxation and contribution to Indian Economy by **Dr. Rajeev Ranade (1976 batch)**, retired commissioner of **Income Tax**.
3. Business introduction by **Janhavi Shah (1996 batch)** on MIS automation, Analysis and Dashboards in Finance in corporates.

- Professional cooperation within Alumni:

- o Following Projects completed by alumni **Parag Kulkarni (2005 batch)**, which created earning opportunities for other alumni.
 1. ODI Investment in Europe was analysed and advisory is offered in terms of investment decision, due diligence, valuation, and secretarial compliance.
 2. Valuation of FDI in technology company was concluded.
- o Efforts made for generating **Funding opportunities from investors abroad (US, Japan)**.
 - For opportunities with Funding consultancy run by alumni.
 - For Alumni owned business in Biogas energy sector.

- Finance ProG members professional information:

- o Collection of professional information completed by 45 members (**Anjali Khatri 1995 batch**)
- o Alumni professional Information access/availability by archiving at common place with the help of Google forms. (**Omkar Lagu-2000 Nigdi batch**)

- **Blogs initiative:**

- o CA. **Parag Kulkarni** and his team have carried the research of 119 countries for their lockdown period and respective impact on markets for the period between 1st Jan 2020 to 20th Nov 2020. The pandemic has been identified as a black swan. Blog elaborates nosedive of stocks since 20th Feb and its further recovery until now in 10 countries. Covid-19 has accelerated existing macro trends such as digital transformation and public-private partnerships. What does it mean for trade patterns and trade systems? Will it mean more fragile global systems? Nobody knows all answers but you can read the blog to get a perspective on the underlying subject.

Future plans:

- Formation of small sub-groups with common interests, to emerge focussed theme initiatives.
- Multiple knowledge sessions
- Identifying areas to develop more professional cooperation opportunities within Alumni.
- o E.g. How the group can be of help to Business Owners/Entrepreneurs etc.
- Business introduction from members within group.

Since Finance is unavoidable part of any individual, Finance ProG welcomes all Alumni to interact with us.

Creating an ethical & trusted "service model". Financial backbone/support to SPG projects.

Potential services portfolio – project evaluation, financial feasibility, legal/tax diligence, pre-funding ideation, risk evaluation, connecting to right people etc.

Already reaching out to SPG members for the finance requirements for their projects has been initiated.

A document detailing potential support that can be expected from Finance Horizontal is planned and will be published shortly.

Rapport building with Sr. members of JP is initiated and will continue for some time to come.

ProG : HEALTH

Health ProG was formed and the first meeting was held on 19/04/2020. This was a virtual meeting. Over 50 alumni attended. Dr Dhananjay Kelkar spoke at length about Covid 19. He outlined the future impact of the pandemic. Dr Vaishali Biniwale and Suvarnatai Gondhalekar elaborated the health related activities being conducted at Velhe – mainly focused on Mother and Child health.

The second meeting was held at DMH on 15/08/2020. This was a real meeting and around 20 alumni attended. At the end of this meeting, it was decided that focus needs to be on improving the digital presence of various activities of DMH and JPMT.

Recently a core group for the ProG has been constituted. An online meeting of the core group was held in November 2020. A plan was made to coordinate and have clinics and tele-medicine in Velhe taluka – with help of Suvarnatai and Dr Biniwale.

Hopefully in the future, this ProG would transform into SPG since it will tackle national & global health issues.

o COVID-19

§ *Sharing of ICMR guidelines and frontline experiences by Dr. Neelima*

§ *A series of articles and guidelines by Dr. Kelkar*

§ *COVID related help & assistance project at Velhe*

i) *Discussion on “Tele-Medicine” was held. Support of DMH can be taken for this task force.*

ii) *Study on “Immunity improvement” is planned.*

o *Will transform into SPG since it will tackle national & global health issues.*



Meeting about action plan in Velhe taluka

ProG : HIGHER EDUCATION, HUMAN RESOURCE, PSYCHOLOGY

ProG in 'Education, Psychology & HR sectors' formed ON 23 Aug 20

First meeting for formation of this group was held which was attended by 54 members. Total 115 members are there in WhatsApp group (Extended) out of which data of 74 members is available through Google form.

Two meetings of Core group were held. And following action plan was suggested –

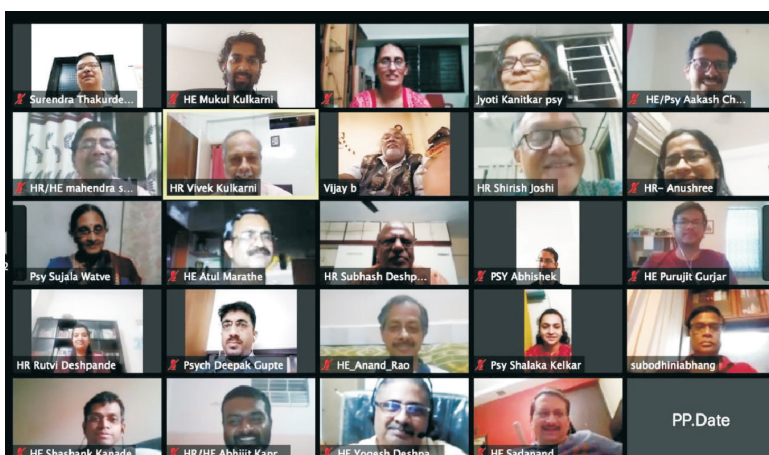
Regular webinars in which detailed introduction of certain senior members shall be done with respect to HEHRPSY and topic wise panel discussion like education systems in other countries.

This shall be with focus on higher education or human resource or psychology or it could be combined in three capsules of 20 minutes in one session. Introductory sessions shall be like "know each other sessions, basically skill set introduction. Through these sessions we can find juniors and seniors who can interact to help each other in individual development.

Following two **action research projects** are suggested by Core group

1. An action research on how students, teachers and other stakeholders are responding to the new normal of online education and assessment in school as well as higher education. How to increase soft skills in higher education students to build their employability with 21st century skills.
2. National education policy 2020 talks about having new big institutional structure and also different job profile of the teachers like administration and management. Group with diverse background and expertise can generate a model to train teachers as well as to get the new human resource for successful implementation of these new ventures in higher education.

To prepare a training program like incubation centre for entrepreneurship in teachers from national education policy requirements point of view.



First Meeting of higher education, human resource, psychology

ADVOCACY & RESEARCH

Group-Description

A group to support SPG-ProGs in theorization of their problem statement bank through documentation, research and action projects and help them in policy advocacy.

Purpose

1. Long term aim is to generate a strong research-based advocacy support for policies in different sectors handled by SPG-ProGs.
2. Short Term Aim is to provide support to SPGs-ProGs to bring/build dimension of research to the activities they are carrying out. It can be done by introducing simple activities like literature survey, documentation, critical thinking, reading, writing, analysis, action research etc.

Possible Activities

1. Directing towards the relevant literature for the topics which are taken up for study by SPGs.
2. If the groups are inclined towards one direction only, giving them information about other views and also bringing relevant information from the other dimensions, disciplines e.g. bringing in different perspective in the SPG-ET (Emerging Technologies) than 'Abundance' book based approach, starting discussion regarding hydrocarbon-based energy in SPG-EE
3. Helping in documentation.
4. Helping in Critical reading, thinking, analysing, writing.
5. Asking critical questions/doing scientific inquiry in the discussion going on the groups.
6. Creating Research Question Banks.
7. Identifying possible action research projects and providing facilitation for carrying out them.
8. Inculcating interdisciplinary/multi-disciplinary/trans-disciplinary approach wherever possible.
9. Introducing and helping with application of possible research methodologies.
10. Creating awareness about policy advocacy and ways to go about it.
11. Organizing presentations regarding the researches carried out by the SPG/ProG members. These will help as process models for other aspiring researchers.
12. Social Science Research Institute being set up at JP on complex and interdisciplinary problems.

synergy between this institute and SPGs is seen Research Projects can be planned.

Guidelines

1. Support will be based on the demand from the groups based on their state.
2. Groups can be introduced periodically to certain relevant information about the research related activities allowing the groups to decide the applicability of them based on their needs.

Activities carried out in 2020

1. Presentations

- a. Session on 'Policy Advocacy' by AjitraoKanitkar hosted by NI&NS SPG for all the SPG & ProG Members – 26th July 2020
- b. Brief presentation on 'Livelihood and Employment' by Dnyanada Deshpande – 26th July 2020

2. Research Question Banks - Discussions with Ecology and Environment (EE-SPG), National Integration and National Security (NINS-SPG), Arts & Culture (AC-SPG) group members and facilitating them to come up with research questions, small projects around those questions.

3. MSME-Defence Research Project (WIP) – A research project was taken up by members of LE-SPG along with members of Research Horizontal Group under the guidance of AjitraoKanitkar.

In this research, it is intended to meet about 40 to 50 SME owners and capture their perception (as experienced by them in the last 20 years). Most of them have been long term suppliers to the defence sector much before the Make IN India policy was announced. The Atmanirbahr initiative and recently announced policy for defence procurement will also take some time to unfold. Therefore, this is considered as an opportune time to study the current practices from the perspectives of the SME entrepreneurs.

Proposed Activities for 2021

1. Organize presentations regarding the researches carried out by the SPG/ProG members/JP Alumni regularly. These will help as process models for other aspiring researchers.
2. Organizing presentations regarding the policy advocacy experience of the SPG/ProG members/JP Alumni.
3. Identify short term, long term research/study projects by having discussion with SPGs and provide facilitation for carrying out them.
4. Facilitate in locating in required reference material for different study/research topics.
5. Organizing workshops regarding research methodology and other research related topics.

ENTERPRISE AND ENABLEMENT HORIZONTAL

The E&E horizontal group currently has three members.

We want to - connect to SPGs and ProGs through meet-ups, talks, portal and blogs

So that – we can facilitate

- Access to extended ecosystems to alumni,

- Mentor incubations,

- Consult on organisation design

- and Help arrange funds for financial inputs

For both JPP Alumni groups as well as initiatives started by individual alumnus.

We would measure our work by number of cases and interventions.

Access to extended ecosystems

When extending access, we are able to connect mutually beneficial alumni and non-alumni who may not otherwise be in the same social circle or be aware of the expertise available.

In the coming year we hope to help find suitable co-founders for our eager alumni.

Mentoring

Many a times, the entities who can use external help are not aware of such potential. When mentoring young businesses, we help with regular self assessments and arriving appropriate actions.

Gireendra – himself a successful serial entrepreneur is the face of incubation for us. He mentored the AIT start-ups this year.

In the coming year, we hope to enable businesses initiated by JPP alumni.

In the coming year Gireendra is discussing partnership with Dominix.

Organisational Design

The direction, focus, work targets, work allocation of any functional unit fall under 'organisation design'. The E&E helps our SPGs, ProGs and businesses run by our alumni to more efficiently deliver the best they can.

Shirish is our domain expert in this area. He has given all the seed thoughts for SPG / ProG structure.

During the coming year, Shirish will be available to SPGs while Geetanjalee will focus on ProGs. All of us offer ourselves for any alumni initiatives needing help in this regard.

Funding

Entrepreneurs need to be all-rounders. Apart from their domain expertise, they also need to know financial planning, various options available for arranging finance, appreciate the various stages of financing and the strings that come attached with them.

Gireendra as a VC himself and Geetanjalee as someone associated with financial markets for over 30 years, are happy to help any JPP alumni initiatives find sources. Some of these are already underway.

We hope to help at least one start-up get funded in the coming year.

Reach-out

An outside pair of eyes always add new perspective. The value of such inputs is not as apparent as the hard work put in by people on the ground. While we are sure that as portfolio of this group builds up, people and groups will come to us on their own, in the initial days, we need to reach out and tell people of the value we can add and perhaps share some case studies.

The group plans to communicate via portal, talks and blogs.

To ensure that there is a two way communication, meet-ups are of great importance to us. Even to connect people across various pockets and external agencies, we need to continuously meet people and possibly attend meet-ups of the verticals. Alumni database too would be a great help to find the right people when we need them.

We look forward to an year of growth, productivity and prosperity to JPP groups and alumni initiatives.

SPG is a generic term. Though there are Professional groups (ProGs), the titular SPGs and Horizontals, de-facto they are all groups with two-fold special purposes, and therefore SPGs.

The first of these purposes is to make birds of same interests, passions or expertise fly together. The second and more important purpose is to connect prabodhaks (for there are not just alumni of JPP, but other persons associated with Jnana Prabodhini) with each other. Just as in a family everyone accepts everyone despite of opinions as well as idiosyncrasies, so has been the development of bonds in many of the SPGs. Expertise, positions do not create an inhibitive atmosphere within SPGs, thanks to these bonds.

The creation of these bonds was obviously the consequence of discussions, sharing, chatting, multiple programs etc.

Inclusive approach is a consequence of acceptance towards each other which stems from the bonds mentioned above. The success of SPGs is positively correlated with the amount of sharing, knowledge-products so produced and strength of bonds between the members. The journey so far is immensely wonderful, but the journey ahead will be successful if each of the variables mentioned above is delicately optimized with high involvement of many members.

- Nachiket Nitsure (2005)

NETWORKING, DATABASE & PORTAL SUPPORT HORIZONTAL

Internal Networking:

Networking team started work since March 2019 to reach out to the alumni for centenary program. Past students' data was available in multiple places in multiple forms but the data was mostly stale. So the team identified 2-3 individuals from each batch to collect updated data of their classmates. That is how the connections started happening.

The data that was collected through batch coordinators was then used on the JPP Alumni portal so that everybody could reconnect for alumni gathering in the centenary year. During the gathering many found reasons to continue to connect, which was evident during the year 2020 when SPG, ProG and other interest groups started meeting regularly. These small gatherings were mainly of like-minded groups, experts and other stakeholders.

To make such meaningful connection happen and for alumni to benefit in long terms on the JPPAF platform, Networking and Outreach group proposes to strengthen its reach to every member through many small, interesting activities.

- **The key challenges in the year ahead are,**
 1. How to keep the members' data fresh and relevant?
 2. How to upscale the existing portal for ease of doing things?
 3. How to expand the reach out to other JP institutes?

Networking and Outreach team intends to work in year 2021 towards mitigating above challenges and be the backbone of the mandate of the JPPAF.

External outreach and networking:

- 1) The JPP outreach work started much before this horizontal formally came into place. It was primarily geared towards generating public awareness about JPP's work through mass media.
 - Media representatives were invited to JPP for an interaction with Dr Girishrao Bapat, Shri Subhashrao Deshpande and Shri Milind Naik. All leading English and Marathi newspapers published informative articles on the eve of the golden jubilee inaugural function in June 2019.
 - The mega gathering of JPP alumni on December 22, 2019 was also covered widely by all leading newspapers and television channels.Coverage of the two events created a buzz and curiosity about alumni activities besides reinforcing the JP/JPP brand in public mind.
- 2) Restrictions on social interactions since March 2020 severely constrained similar mass media coverage since the mega gathering of last December.

- 3) Another reason for slowing down on external outreach and networking was that the alumni activities over the last seven/eight months were entirely focused on structuring and streamlining of various verticals .

2021 and beyond:

- 1) JPP Alumni Foundation will come into being shortly. The back office is in place and will be strengthened further. We shall also have an enhanced version of our portal.
- 2) These three factors will empower the external outreach/networking significantly, starting 2021.
- 3) Digital networking efforts on a continual basis will be complemented by those that will be made through conventional mass media whenever the occasion demands.
- 4) As for reaching out to, and networking with relevant education/research institutes, NGOs, government agencies and individuals, this horizontal will stay in regular touch with all the verticals and other horizontals to tap all possibilities.
- 5) The outreach and networking effort will become sustainable if it stays in tandem with the work at JPPAF. Therefore, periodical interactions between this horizontal and other horizontals will be essential. This will be structured in consultation with the JPPAF's BoD in January/February 2021.

The Horizon Ahead

In Prabodhini, relations are established not only due to attraction between persons, but due to matching of thoughts and motivations. The ties that we find lasted so long after the 6 years of school student-hood here, are far beyond the nostalgia found amongst the conventional batchmates elsewhere.

Long has been the individual journey of realizing one's dreams in career and social life till today. An aspiration seems to rise on the horizon of every alumnus mind of cohesive action. The up-coming generations are also seen to trade the same path of exploring real life challenges. That has become the binding force now in forming the SPGs and Progs.

The topics selected in SPGs are quite challenging to get addressed and the professional fraternity that is experienced in Progs is very promising. We have a long way to go, but the last year's journey confers a promise on the spirit of education at Jnana Prabodhini Prashala over the last 50 years. The so called perpetual student-hood is seen culminated into a leading performance in various walks of life and now converging for collective thinking, action and advocacy on the riddles of our national life. I am with you.

-- Suabhash Deshpande (1968)

FIELD PROJECT SUPPORT

- **Harali area :**

Jnana Prabodhini's Harali centre in Osmanabad district is a hub for education, agriculture and rural development. As such, it is an ideal platform for carrying out field projects of various SPGs. In the last one year, following activities / discussions took place:

1. Discussions about various aspects of digital education were held with SPG – ET Education sub-group. The sub-group is working on making a Marathi version of popular coding tutor 'Scratch' for which trials will be conducted in Harali school. A proposal to conduct a field research on 'a comparative study of the efficacy of digital education in rural and tribal areas during the pandemic' is under discussion.
2. A project for developing a 10- acre area at Harali campus as a natural forest / managed grassland has been undertaken in partnership with SPG-EE and Ecological Society. After successful implementation, it could become a model for similar projects at village level.
3. Discussions were held with Shri. Pravin Dravid of SPG-ET regarding possible interventions for improving the state of small and marginal farmers Marathvada. It was felt that there is a need to have a dedicated Inter-SPG sub-group on rainfed agriculture.

A few more projects which could be considered in future are as follows:

1. SPG-ET (Digital Education task force) – Developing technology-based-solutions for implementation of NEP in rural schools.
2. SPG-ET (Energy task force) – Pilot project for Energy farming.
3. SPG-EE (Waste Management task force) – Solutions for effective waste management in villages.
4. SPG-LE : To study the effect of WFH (Work From Home) phenomenon post-Covid on migration of rural youth.
5. SPG-NINS: Integration of marginalized Nomadic communities into national mainstream.

It is felt that regular meetings of Field Projects horizontal with SPG representatives will help in taking this work ahead.

- **Velhe area:**

'Stree Shakti Prabodhan', Grameen is working in rural areas around Rajgad, Torna and Sinhgad forts since 1995. Currently we are carrying out about 25 different types of activities and through them are in regular touch with 9 to 10,000 women.

From our 'Health Group', a few Doctors are involved in some of our activities. For example, Dr. Vaishali Biniwale is associated with Gynec health for the past 15 years, initially in Ambavane village and now in Velhe village. Dr. Vaidehi Kelkar is running a dental clinic (for women as well as men; otherwise all of our programs are geared only for women) for the past 4 years. Dr. Prajakta Joshi has been visiting as a pediatrician for the past 2 years. We would like inputs from our Health Group in 'preventive measures' regarding various health issues of women. Some other past students also get occasionally involved in our activities, for example, 'weekend teaching' of high school students in our Girl's hostel at Velhe.

We are also working in many areas such as Farming, Self-employment, SHG loan disbursement, Banking, Skill Development and Marketing. So you are welcome to get involved in any such activity as per your professional background or liking. There is so much on which we can work together from executing projects to even conducting research and publish papers.

Besides, we can think of initiatives in complete new fields also. For example, we are planning to work on Wet Waste Management in the city with the Environment Group.



JPP Alumni Foundation

Jnana Prabodhini,
510, Sadashiv Peth,
Pune - 411030

Contact

9579900129
alumni@jnanaprabodhini.org

Office Staff

1. Shrinivas Desai
2. Purnima Parekh
3. Sanket Bhandare

Design by

Prabodh Sampada